

## Scan-X Swift Configuration with CADI

**Make sure you have installed the Scan-X Swift unit and the appropriate drivers as described in the Scan-X Swift instruction booklet.**

**You must be using minimum version 6.14.7.28 of CADI to use Scan-X Swift. Make sure it is installed.**

The Scan-X unit has to be connected directly to the USB port of the computer on **its own USB channel, not a shared one from the motherboard.**

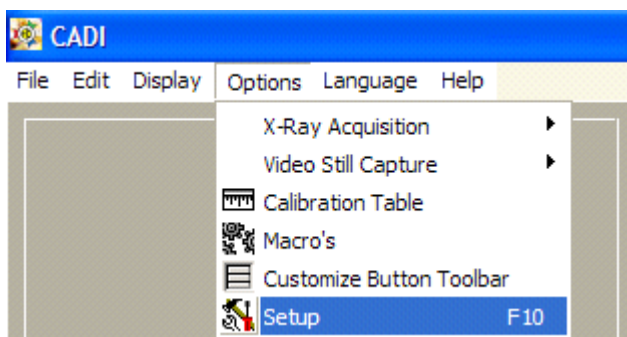
Before using the Scan-X in CADI you must do the following:

- Access the folder on the CD: **\Updates\ScanX Swift Patch**
- Copy the file "**ilmodXRayScanX.dll**" to your **C:\CADI\Modules** folder. (*It will ask you to overwrite the existing file, say "Yes". If you are not being asked, you are not in the right location.*)
- Go to your **C:\CADI** folder and rename the file "**ddip.dll**" to "**ddip.old**"
- Install the Scan-X Swift drivers and utilities from their CD and **WAIT** on the final screen; **DON'T CLICK "Finish"** to run the Scan-X Swift configuration tool, you will click this LATER
- Connect the Scan-X Swift unit and let Windows detect it and install the proper drivers.
- Once done go back to your screen with the "**Finish**" button and click it. The Scan-X Swift configuration tool will run and register the unit in Windows.
- Reboot the PC for the drivers to fully be recognized.

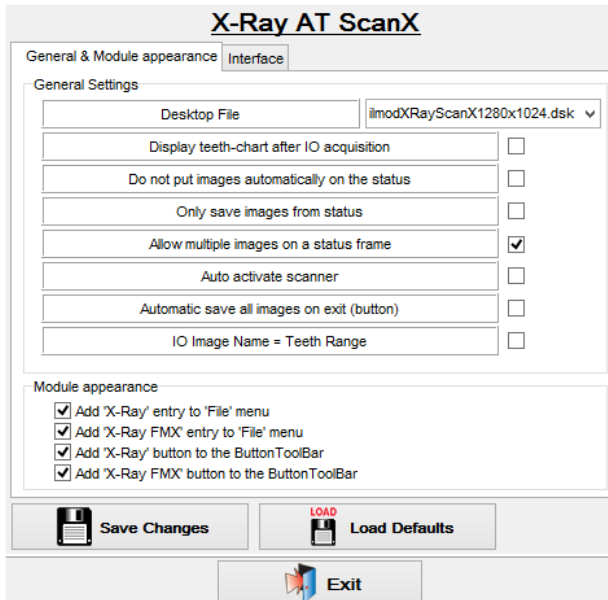
Once this is done you are almost ready to use Scan-X Swift with CADI.



Launch CADI using the CADI icon.



Go to "**Options**", "**Setup**"



**X-Ray AT ScanX**

General & Module appearance | Interface

General Settings

Desktop File: imodXRayScanX1280x1024.dsk

Display teeth-chart after IO acquisition: ☐

Do not put images automatically on the status: ☐

Only save images from status: ☐

Allow multiple images on a status frame: ☒

Auto activate scanner: ☐

Automatic save all images on exit (button): ☐

IO Image Name = Teeth Range: ☐

Module appearance

☒ Add 'X-Ray' entry to 'File' menu

☒ Add 'X-Ray FMX' entry to 'File' menu

☒ Add 'X-Ray' button to the ButtonToolBar

☒ Add 'X-Ray FMX' button to the ButtonToolBar

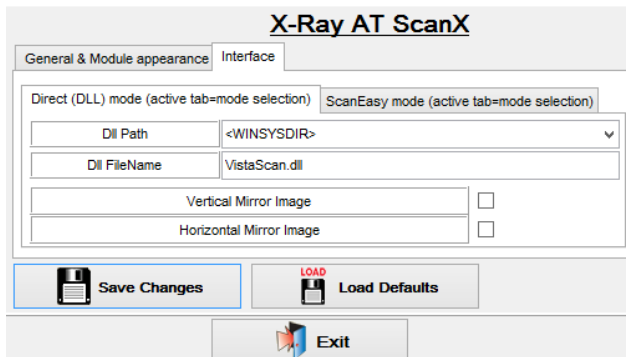
Save Changes Load Defaults Exit

Select **"X-Ray AT ScanX"**

Click on tab **"General & Module appearance"**

Put a check mark in **"Allow multiple images on a status frame"**

Make sure **"Auto Activate Scanner"** is **NOT** checked



**X-Ray AT ScanX**

General & Module appearance | Interface

Direct (DLL) mode (active tab=mode selection) ScanEasy mode (active tab=mode selection)

Dll Path: <WINSYSDIR>

Dll FileName: VistaScan.dll

Vertical Mirror Image: ☐

Horizontal Mirror Image: ☐

Save Changes Load Defaults Exit

Click on tab **"Interface"**

**"Dll Path"** must point to **"<WINSYSDIR>"**

**"Dll File Name"** will show **"VistaScan.dll"**

Click on **"Save Changes"** and then **"Exit"**

You are now ready to use Scan-X Swift with CADI.