

OptiView Intraoral Camera in Cadi V6

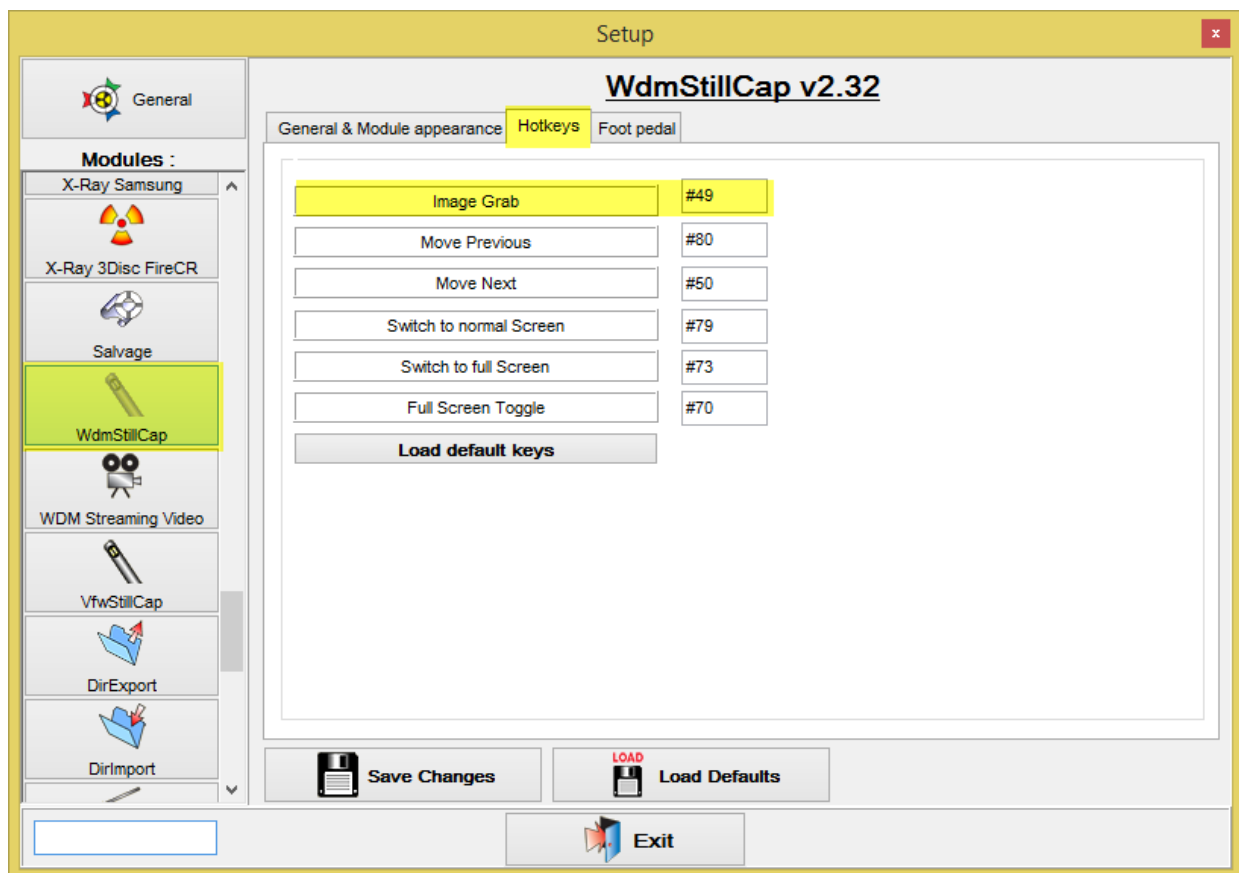
The new CADI Optiview camera from Panasonic is totally integrated into CADI. It has an automatic focus system and a zoom button. Simply connect the camera to the computer and wait for Windows to tell you that the device is installed and ready to use.

Step 1 - Button Setup:
(Customizable)

To configure the buttons for the camera in Cadi go to Options / Setup WDM Still Cap and choose the **Hotkeys** tab.

Place your mouse in the box **Image Grab** – click the button on the camera for this function
 Place your mouse in whichever other function you want for the second button

Click **Save Changes** and **Exit**



Step 2 – Camera Setup

Click the intraoral camera icon in CADI. You should be taken to the device setup screen, *if you are not automatically taken to the configuration, click on **Options** then **Device Setup**.*

Go to the **Expert Setup** tab directly,

Capture - choose **USB Video Device**, which should be the choice available when you click the drop down arrow.

Video Standard must be **NTSC-M**,

Video Format must be **640x480 MJPEG** and

Capture Format must be **RGB32**.

The only other thing to do is to put a check mark in the choice **Video Format Compatibility**

Click **Save and Exit** and the camera will be working.

